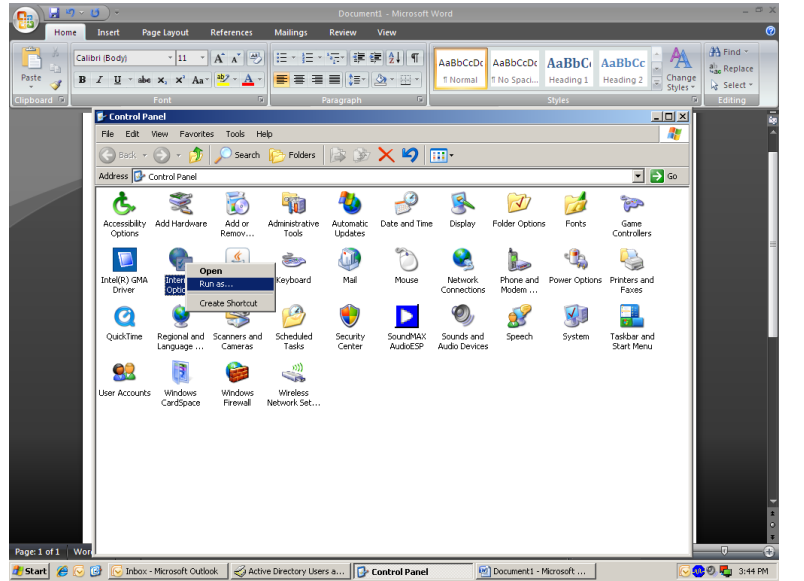


RUN AS Command Option

The **Run As** command allows you to perform functions in a user's profile, while that user is currently logged in, without having to log off and log in as yourself. Many options in the Control Panel can utilize this command. Highlight the option you wish to perform, hold the **Shift** key, then **right-click** with the mouse button and select the **Run As** option from the drop-down list.

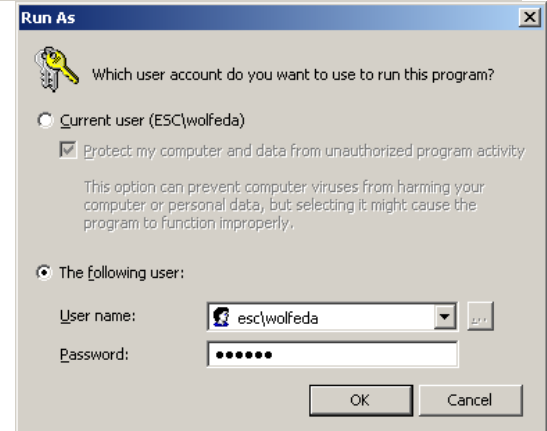


Select the lower option **The following user**. Enter the following in the provided areas:

Username: **ESC\5X2**

Password: your current network password

You are now able to perform STC functions while the user is logged into the computer.



Programs listed on the Start, Programs menus usually do not need to use the **Shift** key to select the option. You may simply **right-click** on the option and **Run As**. Defragmenting the hard drive is an excellent choice for computer that is running slow.

This procedure will enable you to Run As when installing a printer to Windows 7

1. Control Panel – Administrative Tools
2. Shift + Right-click on Print Management
3. Select "Run as different user"
4. " Login as local administrator" and current administrator password
5. Expand Print Servers, expand local pc
6. Right-click on Printers
7. Select "Add Printer..."
8. Continue the normal procedure to add a printer