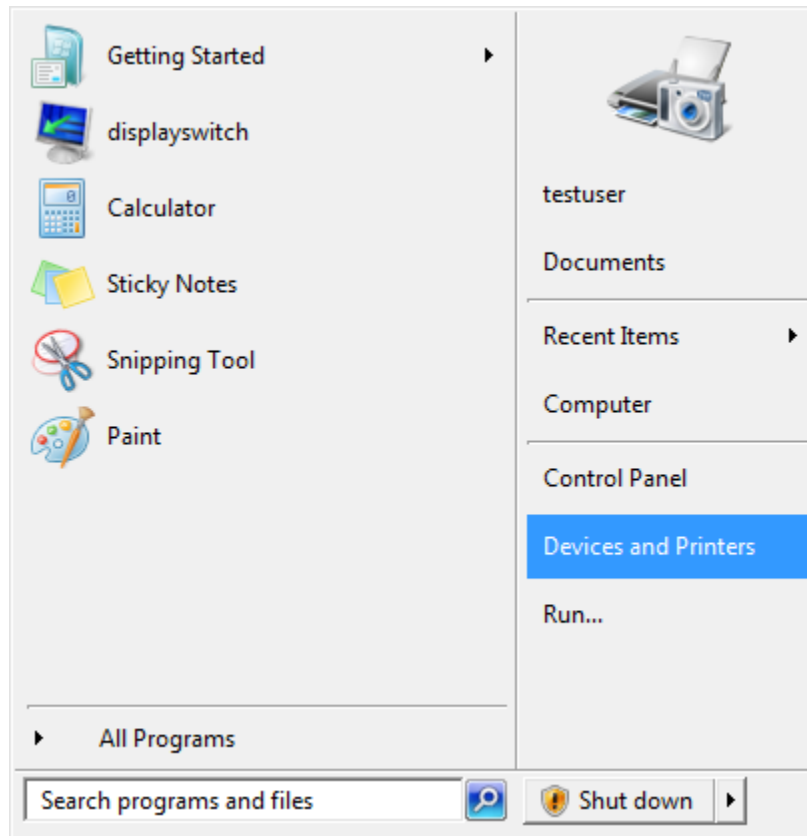
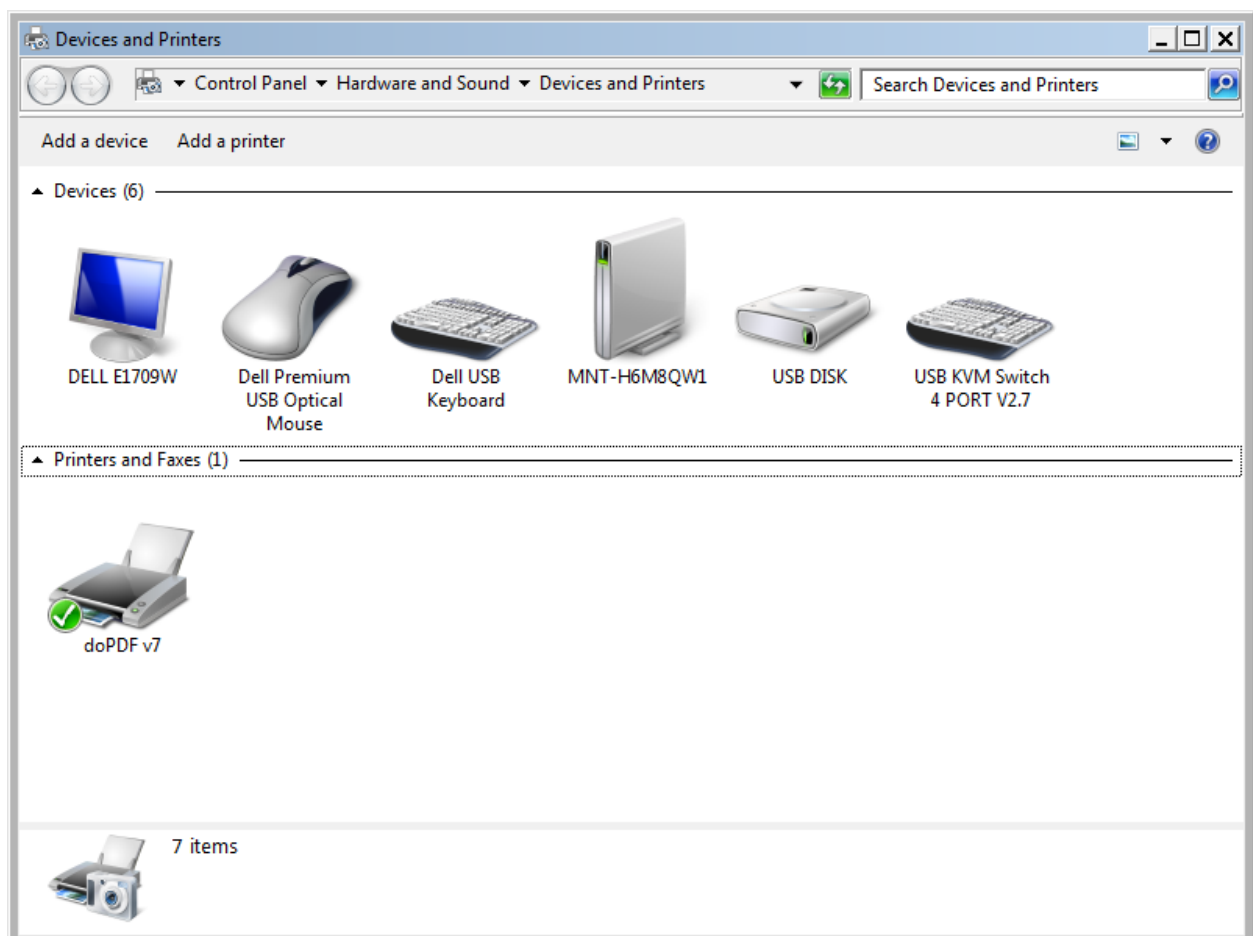


Setting up a Network Printer

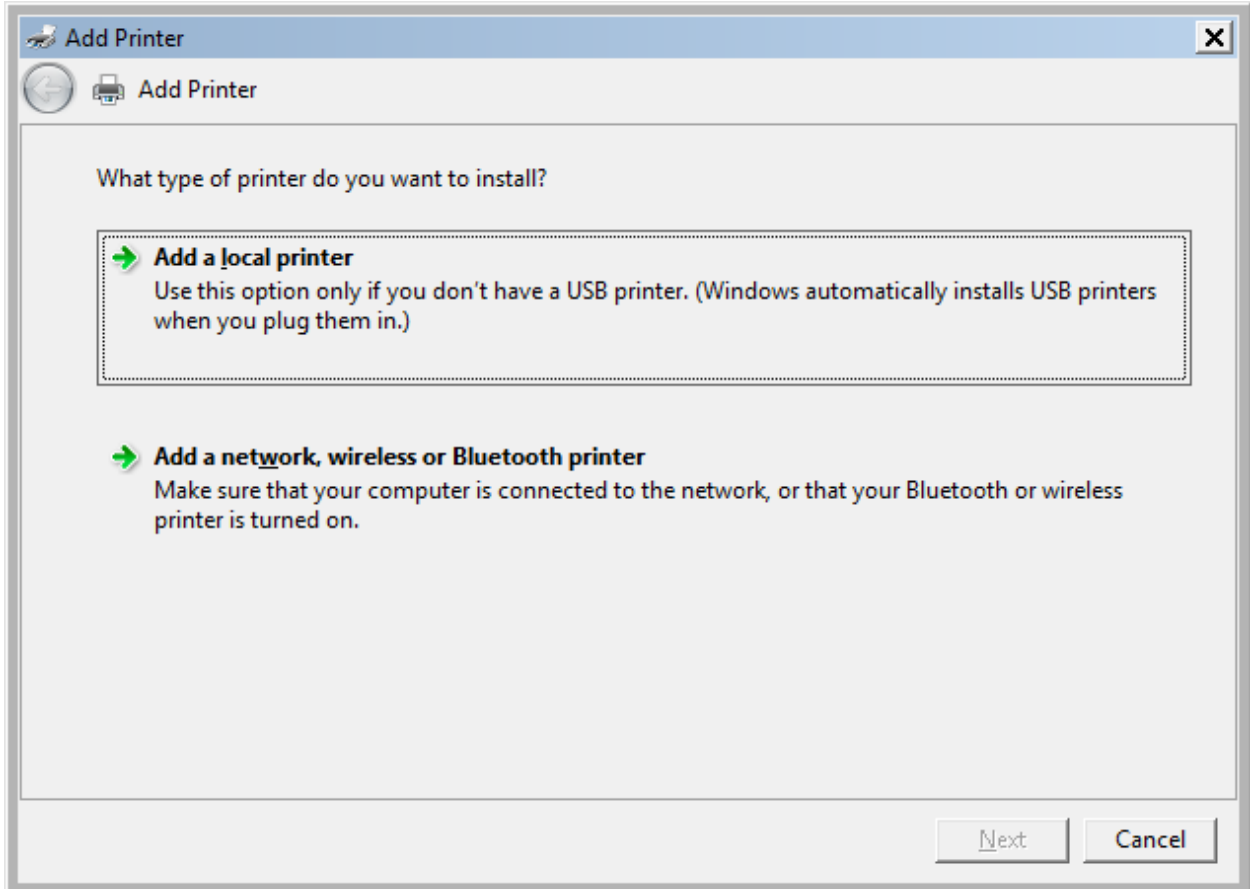
1. From the Start Menu select “Devices and Printers”



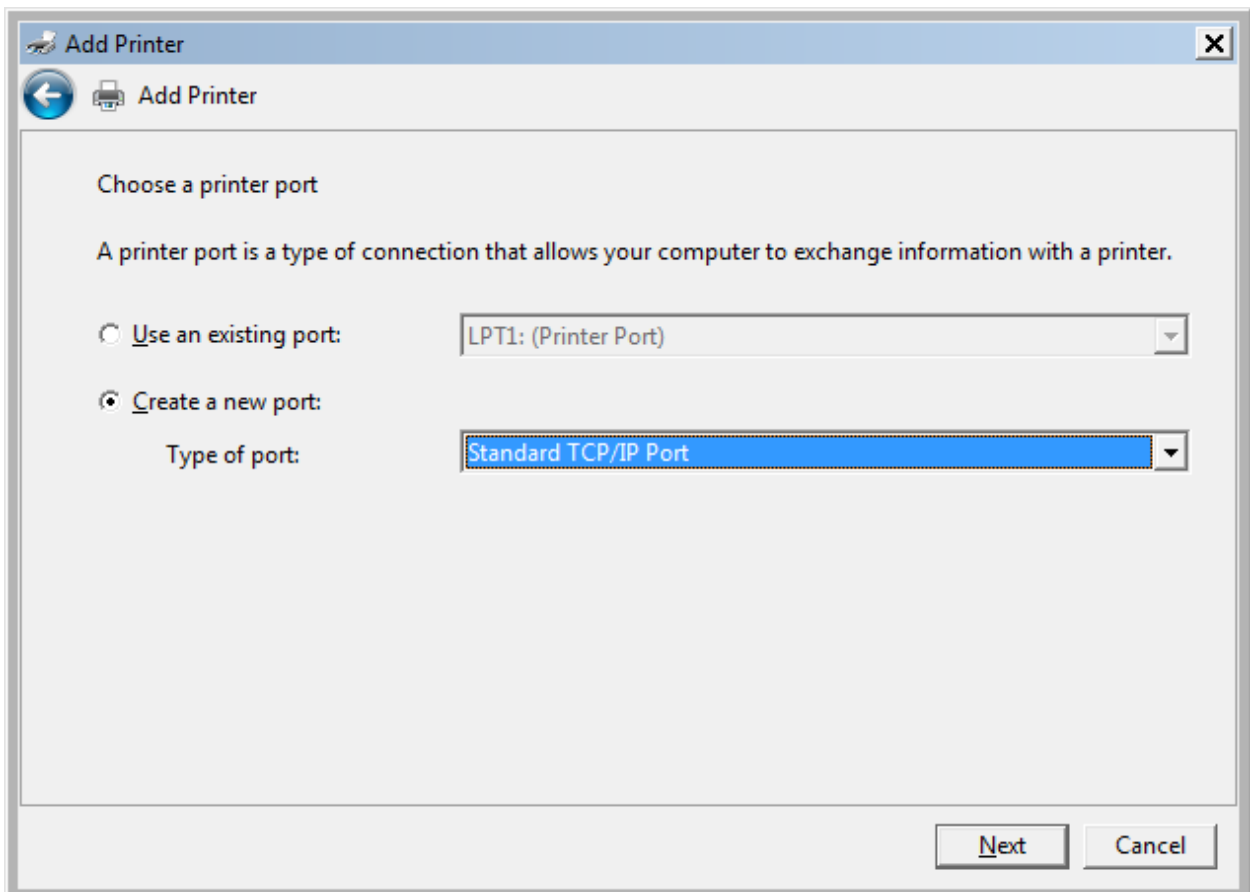
2. Click the “Add a printer” button



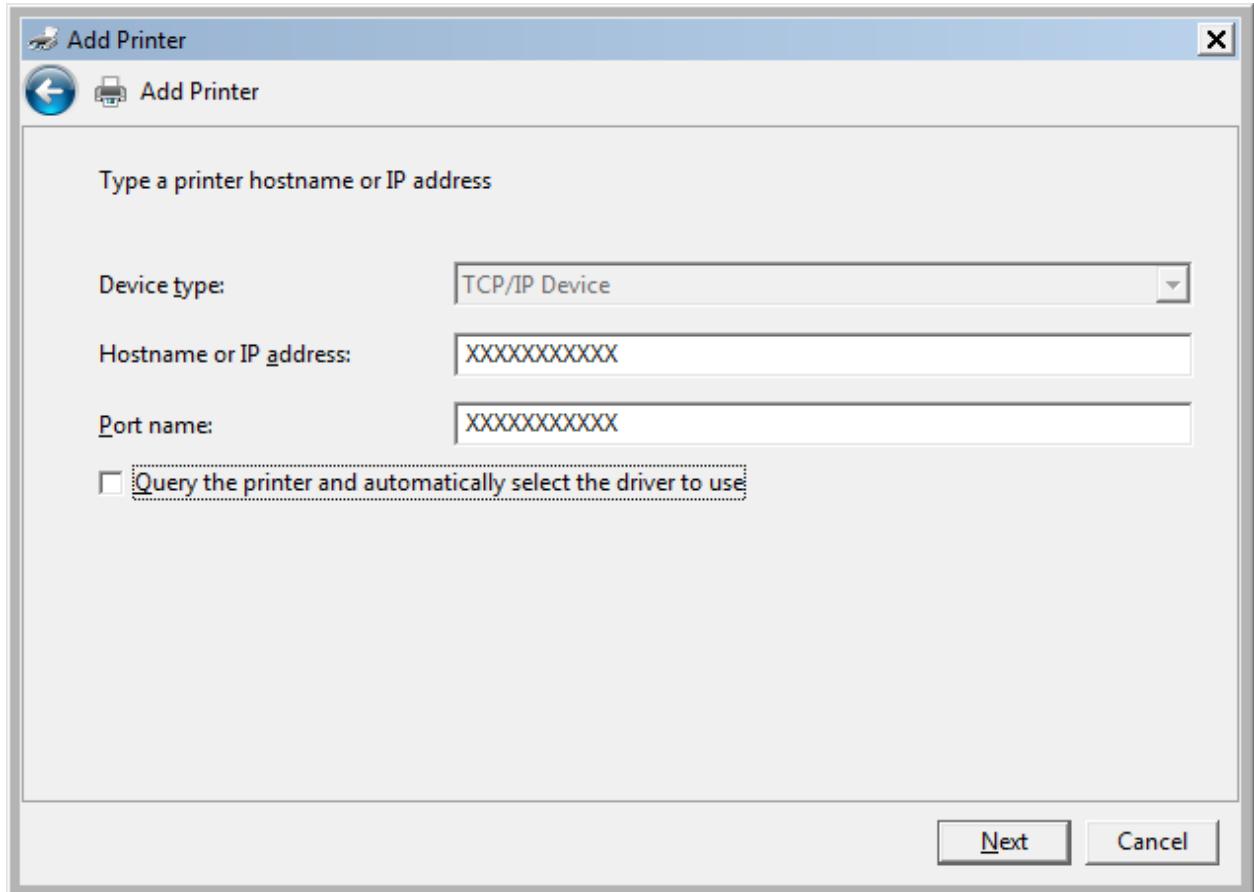
3. Select "Add a local printer"



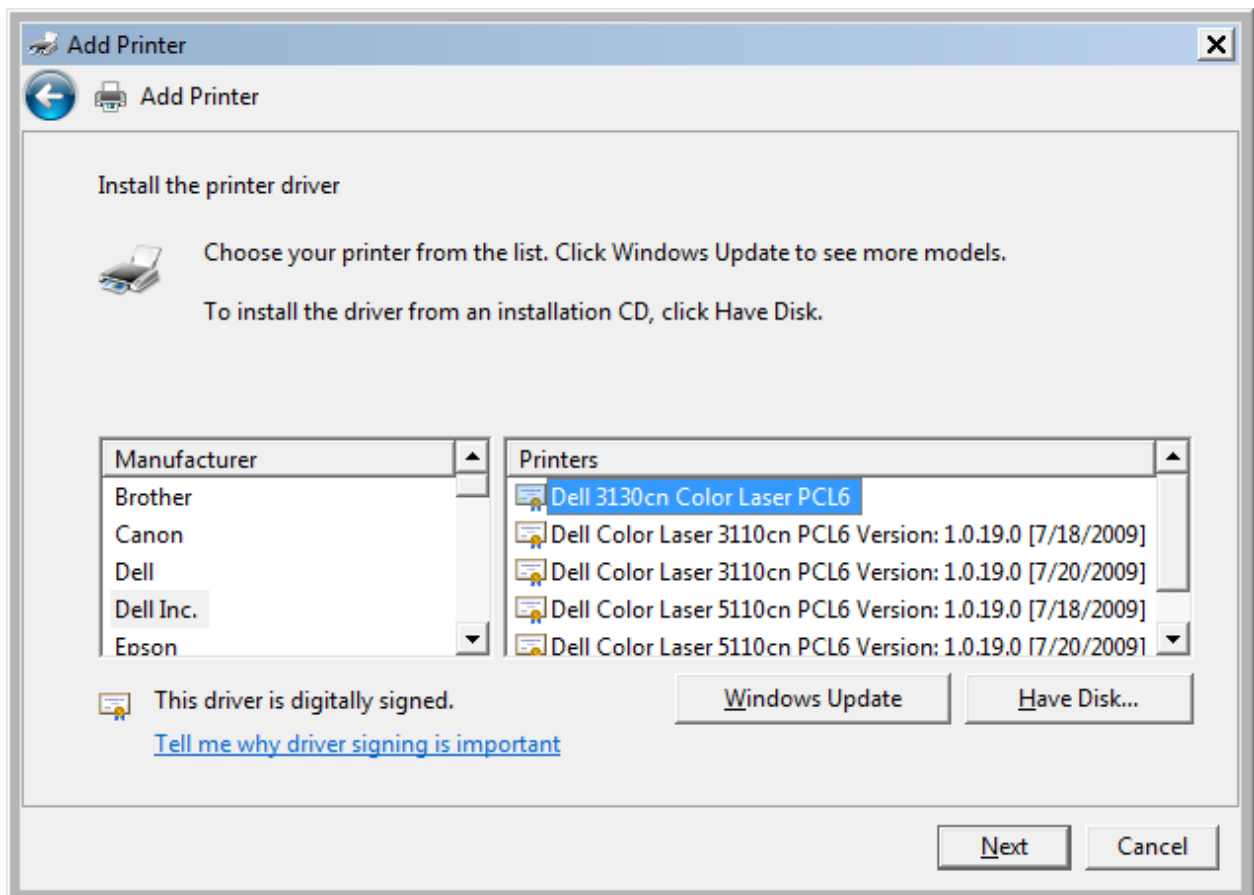
4. Click the "Create a new port" radio button and select "Standard TCP/IP Port" from the drop down.



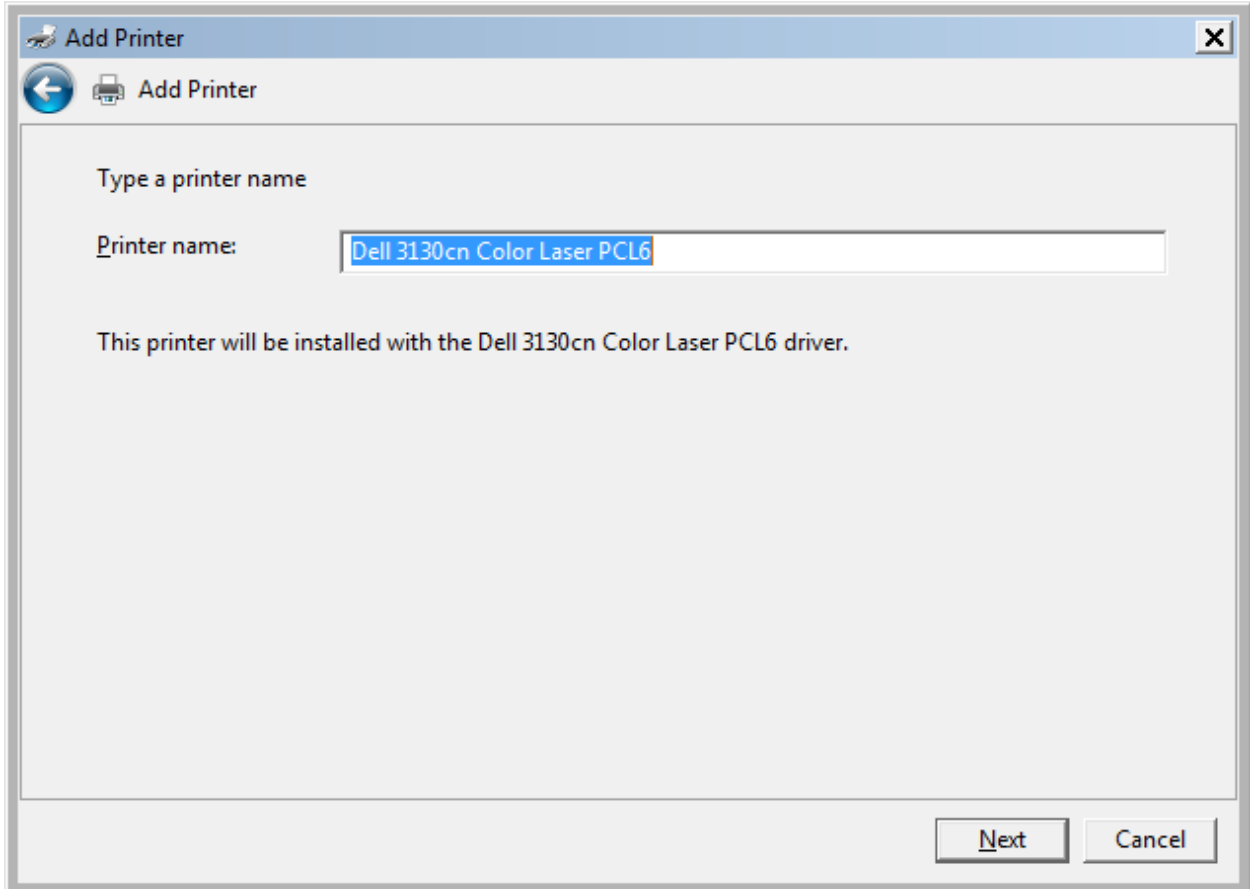
5. Type the hostname from the printer in the Hostname box. It will duplicate it in the box below as you type. Be sure to uncheck "Query the printer and automatically select the driver to use."



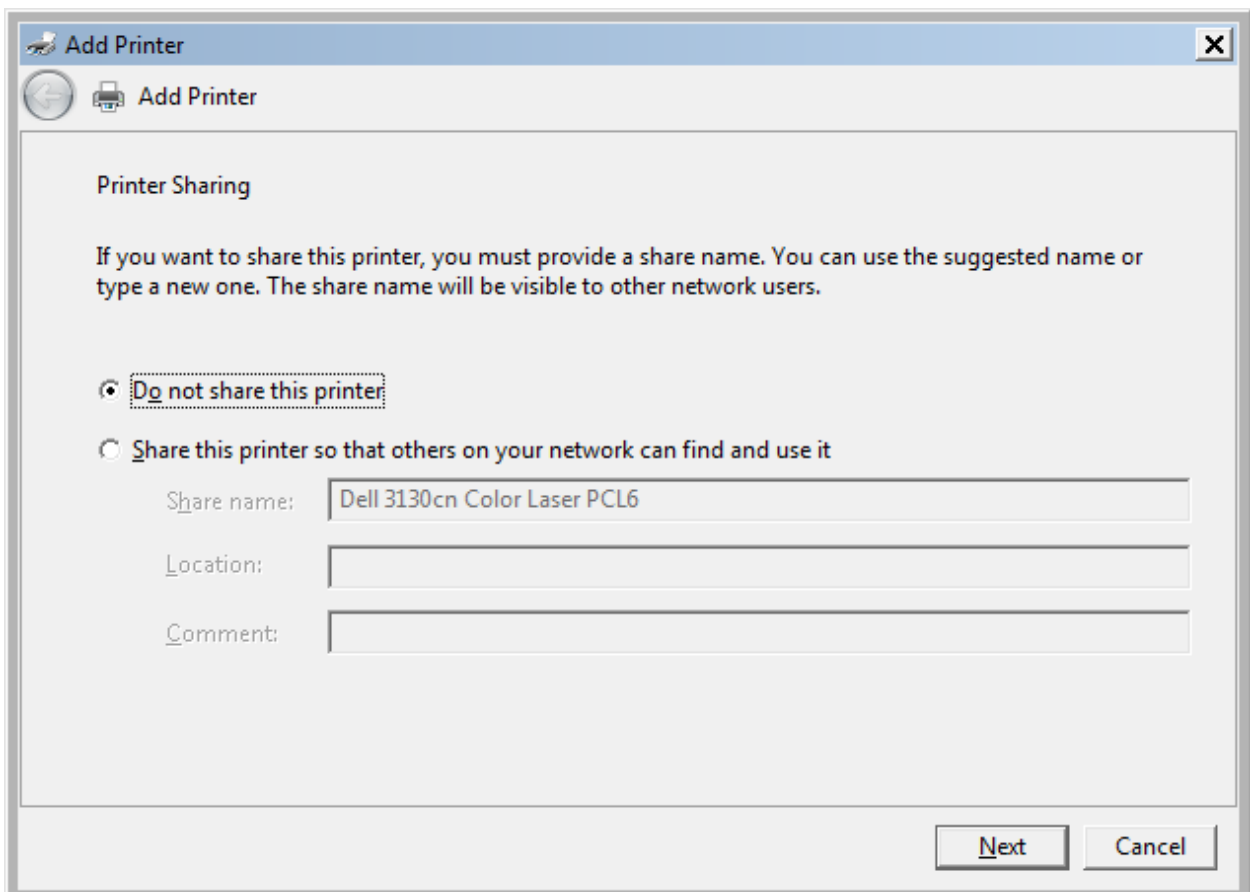
6. Select the correct driver for your printer model. All current dell printer models have drivers embedded in windows already.



7. Name the printer. This is the name the user will see.



8. By default, sharing will be selected. Select "Do not share this Printer" instead.



9. Print a test page to confirm correct operation.

